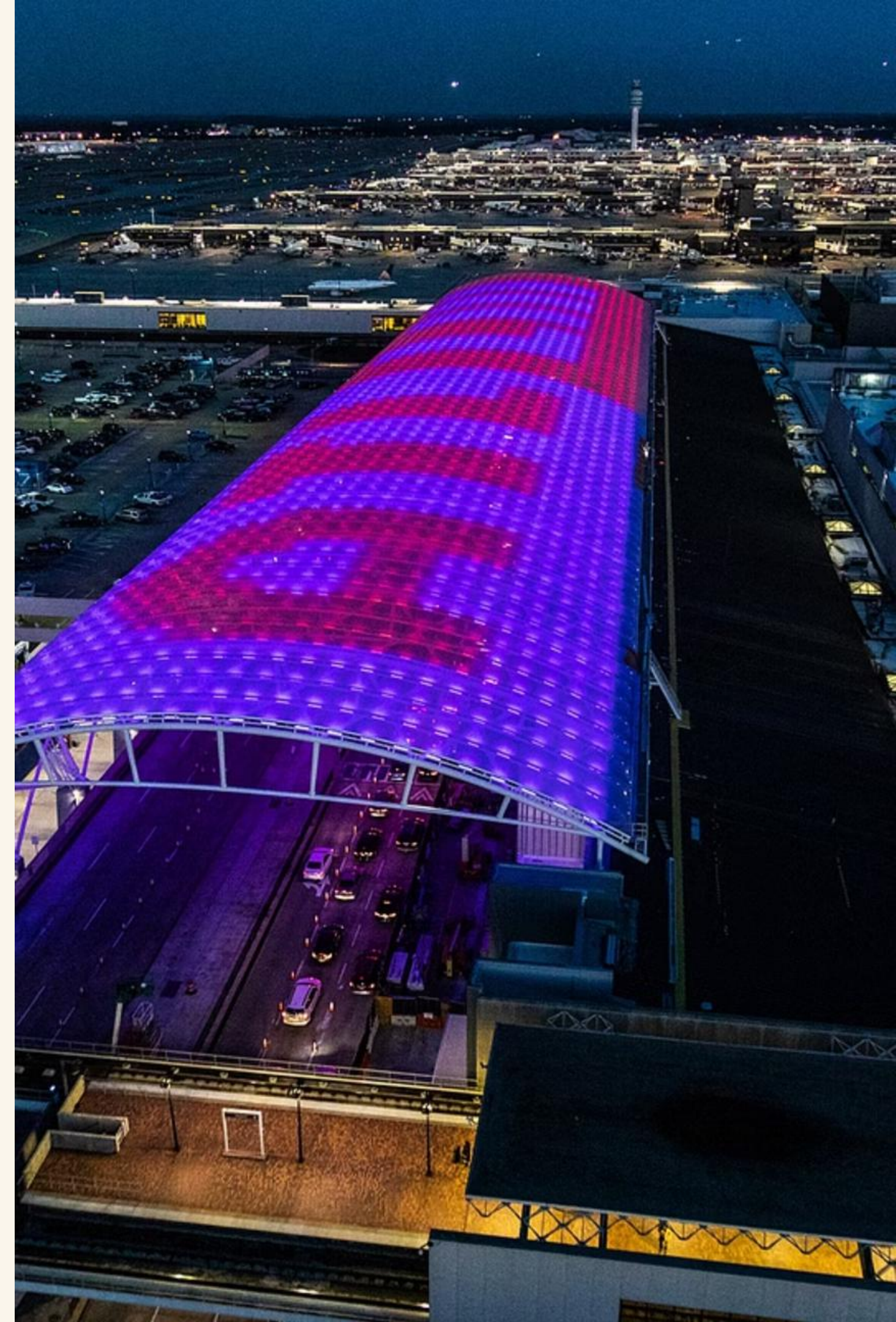


Atlanta Airport Long Term Parking Overview

Hartsfield-Jackson Atlanta International Airport is renowned as the world's busiest airport, serving as a vital hub for global travel. With over 192 gates and more than 30,000 parking spaces, **atlanta airport long term parking** offers extensive options for both domestic and international travelers.

This presentation will guide you through the various long-term parking solutions available, including convenient on-site facilities and cost-effective off-site providers. Whether you're flying to one of over 150 domestic destinations or exploring more than 70 international locations, understanding your parking choices can enhance your travel experience. We'll also highlight ATL's commitment to accessibility, offering wheelchair ramps and specially designated parking spots to ensure a smooth journey for all passengers.



On-Site Long Term Parking at ATL

ATL provides several on-site long-term parking options designed for convenience and proximity to the terminals:

- **Economy Parking Lots:** Offering approximately 7,300 uncovered, self-park spaces, these lots are a budget-friendly choice for extended stays.
- **Covered Parking:** With over 10,000 covered spaces available, travelers can protect their vehicles from the elements.
- **Domestic Park-Ride Reserve and Park-Ride Lots:** These combined lots provide 9,100 spaces, ideal for those who prefer to park and take a quick shuttle or the ATL SkyTrain.



All on-site parking options boast close proximity to the terminals, with most directly accessible via the **ATL SkyTrain**. This automated people mover offers a fast and efficient way to reach your gate, ensuring a seamless transition from your car to your flight.

Off-Site Long Term Parking Options



Popular Providers

Well-known names like **Park 'N Fly**, **Peachy Airport Parking**, and **The Parking Spot** offer reliable off-site services with competitive pricing.



Convenient Shuttles

Located just 0.6 to 2.5 miles from the airport, these facilities provide **free 24/7 shuttle service** directly to and from the terminals.



Added Perks

Many off-site lots go beyond parking, offering amenities such as luggage assistance, car wash services, and loyalty rewards programs.

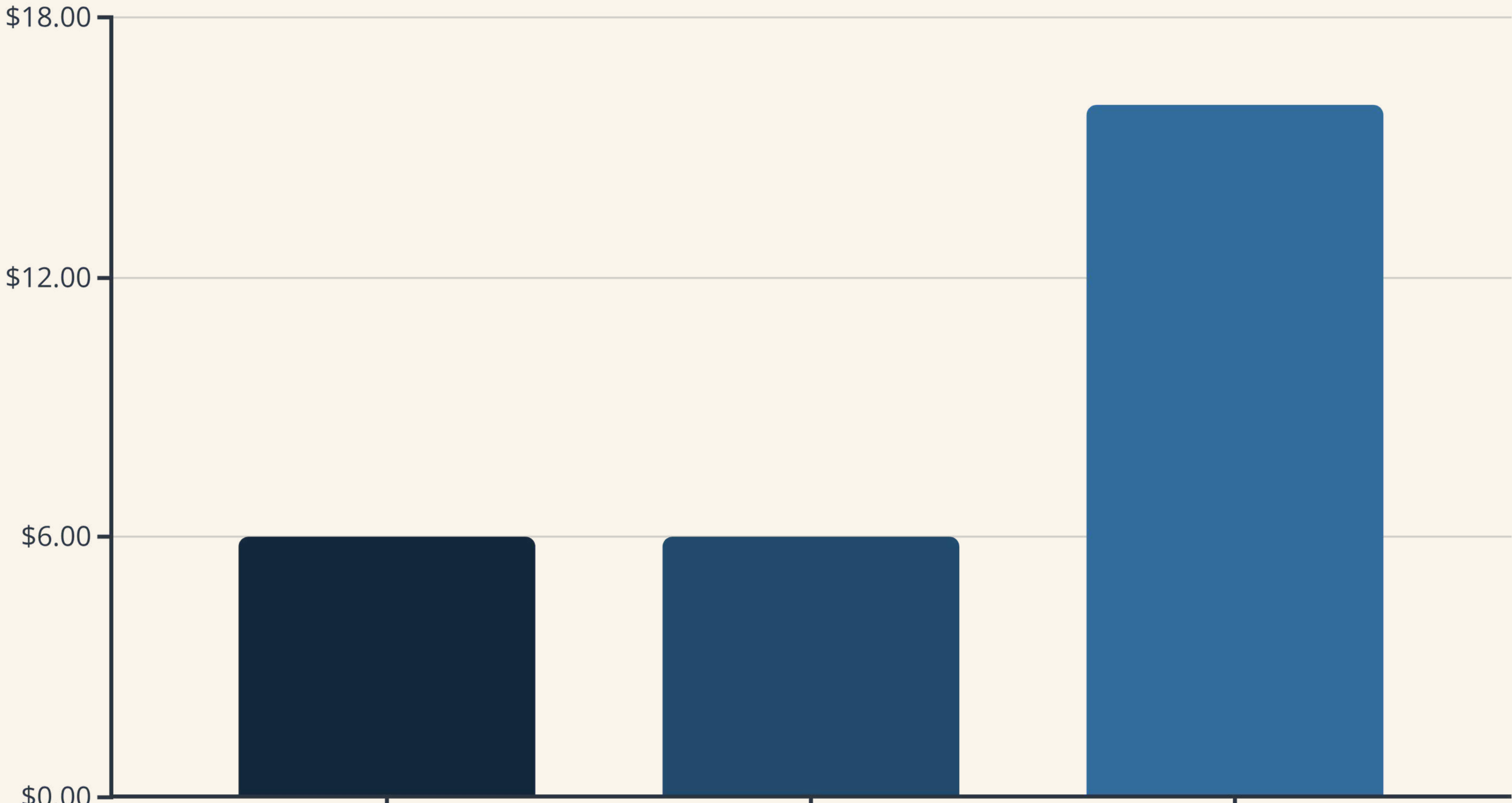


Park & Stay Deals

Local hotels like Motel 6 and Comfort Inn often provide **park & stay packages**, combining accommodation with long-term parking solutions.

Choosing an off-site provider can offer significant savings and a range of convenient services that enhance your travel experience, often including real-time shuttle tracking via mobile apps.

Pricing Comparison: On-Site vs. Off-Site



Shuttle Services and Convenience



Efficient transportation to and from the terminals is a hallmark of long-term parking at ATL, both on-site and off-site:

- **Off-Site Lots:** Most off-site providers offer **24/7 shuttle service**, ensuring you can reach your terminal regardless of your flight schedule. Providers like Peachy Airport Parking even utilize advanced air purification technology in their shuttles for a cleaner ride.
- **ATL SkyTrain:** For on-site parking, the ATL SkyTrain provides a quick and free connection between the rental car center, the Georgia International Convention Center, and the domestic terminals.
- **Real-Time Tracking:** Many services, including Peachy Airport Parking, offer **shuttle apps** that allow you to track shuttle locations and estimated arrival times, minimizing wait times and maximizing convenience.

These robust shuttle systems ensure a smooth and stress-free journey, allowing you to focus on your trip.

Amenities and Security Features



Enhanced Security

Many off-site lots feature **24/7 staffing, bright lighting, and advanced security measures** to ensure your vehicle's safety while you're away.



Valuable Services

Beyond parking, some providers offer additional conveniences like **luggage assistance, car washing, and detailing services**, allowing you to return to a sparkling vehicle.



Accessibility Support

On-site lots are equipped with **designated disabled parking spaces and wheelchair ramps**, prioritizing ease of access for all passengers.



Loyalty Programs

Frequent travelers can benefit from **frequent parker rewards programs** offered by some off-site providers, leading to discounts or free parking in the future.

These added amenities and security measures provide peace of mind, making your long-term parking experience more comfortable and worry-free.

Accessibility and Special Parking



ATL is committed to ensuring accessibility for all travelers, offering a range of facilities and services for passengers with special needs:

- **Wheelchair Accessibility:** The airport provides **wheelchair-accessible ramps** and designated parking spots across all major parking lots, ensuring easy navigation for individuals with mobility challenges.
- **Designated Spaces:** Special parking for passengers with disabilities is clearly marked and conveniently located in all long-term parking areas, including both domestic and international terminals.
- **EV Charging Stations:** In line with modern demands, ATL has integrated **Electric Vehicle (EV) charging stations** at multiple on-site locations, catering to environmentally conscious travelers.

These provisions highlight ATL's dedication to creating an inclusive and convenient environment for every passenger.

Electric Vehicle Charging at ATL Parking

As the demand for sustainable travel grows, Hartsfield-Jackson Atlanta International Airport has proactively integrated a comprehensive network of Electric Vehicle (EV) charging stations across its parking facilities.

Extensive Coverage

Numerous EV charging stations are available on airport property, catering to a wide range of needs for electric vehicle owners.

Key Locations

Chargers can be found in convenient spots including **daily lots, employee lots, and park-ride areas**, ensuring accessibility for various parking types.

Growing Demand

This initiative supports the increasing demand from travelers driving electric vehicles, offering a seamless charging solution during their trip.

Online Information

Detailed charging availability and locations are included in **parking facility maps online**, making it easy to plan your charge before arrival.

These strategically placed EV charging stations reflect ATL's commitment to modern and eco-friendly travel solutions.

Tips for Choosing Long Term Parking at ATL

Selecting the best long-term parking at ATL involves balancing several factors to ensure a smooth and cost-effective experience. Here are some key tips to guide your decision:

- **Distance vs. Price:** Evaluate the trade-off between proximity to the terminal and cost. Closer on-site lots often come with a higher price tag, while off-site options typically offer more competitive rates at a slight distance.
- **Book in Advance:** Especially during peak travel seasons, booking off-site parking in advance is highly recommended. This secures the best rates and guarantees availability, preventing last-minute stress.
- **Utilize Shuttle Apps:** If choosing an off-site lot, download and use their shuttle apps. These tools provide real-time tracking of shuttle arrival times, significantly reducing your wait and ensuring timely transport to the terminal.
- **Check for Amenities:** Consider what extra services are important to you. Some facilities offer covered parking for vehicle protection, while others provide car wash services, luggage assistance, or rewards programs for frequent travelers. Factor these amenities into your decision for added convenience.

Summary: Best Long Term Parking at Atlanta Airport

Choosing the right long-term parking at Atlanta Airport depends on your priorities:

- **On-site economy parking** offers a balance of affordability and convenience with self-park options and proximity to terminals via the ATL SkyTrain.
- **Off-site parking providers** present a cost-effective solution, often including 24/7 shuttle services and additional perks like car washes or luggage assistance.
- ATL demonstrates strong support for **accessibility** with wheelchair-friendly infrastructure and numerous **EV charging stations** across its parking facilities.

Ultimately, the best choice is to **plan ahead, compare prices** between on-site and off-site options, and select based on your specific needs for convenience, budget, and desired amenities.

